



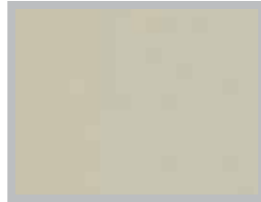
Finish Guide

Note: All finishes are approximate due to limitations of monitor calibrations and printing. For actual finish samples, please consult your local Manning Representative. *Please note that some finish options may not be available on your product selection.*

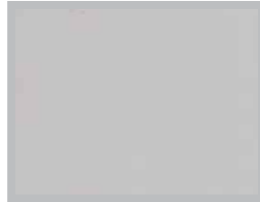
Painted finishes: Choose one of the Manning Lighting standard satin finish paint colors. Our thermo-cured enamels are formulated for high durability and low environmental impact. Specify **PT(XXX)**.



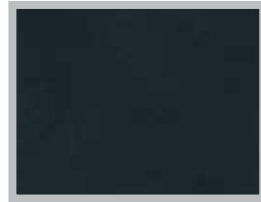
WHT - White



WMG - Warm Grey



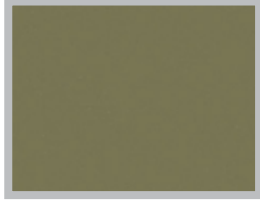
CLG - Cool Grey



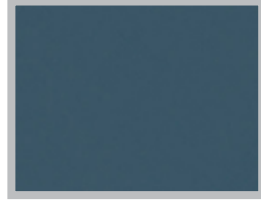
BLK - Black



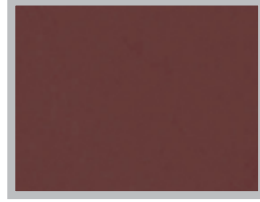
MYL - Mild Yellow



MGR - Mild Green



MBL - Mild Blue



MRD - Mild Red



LGD - Light Gold



MGD - Medium Gold



LTM - Light Titanium



MTM - Medium Titanium



LSV - Light Silver



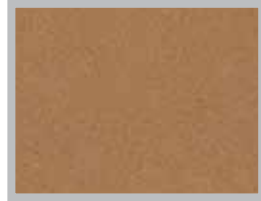
MSV - Medium Silver



DSV - Deep Silver



LBZ - Light Bronze



MBZ - Medium Bronze



DBZ - Deep Bronze



MCP - Medium Copper



DCP - Deep Copper

Premium painted: Multi-step hand finishes add depth and value. Specify **PT(XXX)**.



FVG - Faux Verdi Gris
(Steel or aluminum material)



SAB - Solid
Antique Brass
(Brass material)



FAB - Faux
Antique Brass
(Steel or aluminum material)

Wood finishes: Wood trim (**WT**) components are stained and sealed as shown. Specify **WT(XXX)**.



BRH - Birch



OAK - Oak



DOK - Dark Oak

Wood Veneer (WV) components are unfinished or clear sealed only. Specify **WV(XXX)**.



MPL - Maple



CHR - Cherry

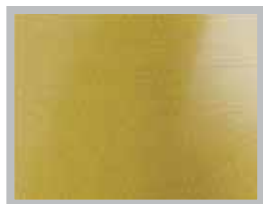


LOK - Light Oak

Metal finishes: Our craftsman meticulously prepare solid metals with brushed, polished and distressed techniques to reveal their unique character. Specify **(XX)**.



BA - Brushed Solid Aluminum



BB - Brushed Solid Brass



BS - Brushed Stainless Steel



CU - Raw Copper



DB - Distressed Brass



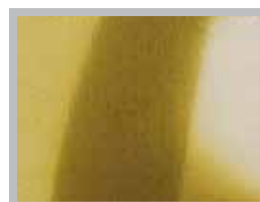
DU - Distressed Copper



DZ - Distressed Bronze

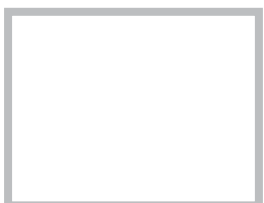


GF - Grinder Finish



PB - Polished Brass

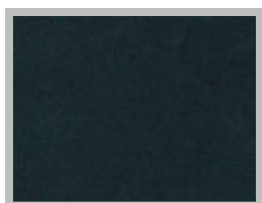
Powder finishes: All of our new exterior fixtures are provided with an eco-friendly, polyester resin powder paint. Specify **PP(XXX)**.



WH - Sky White



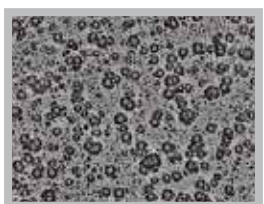
SR - Sparkle Silver



BK - Satin Black



BC - Bronze Crater

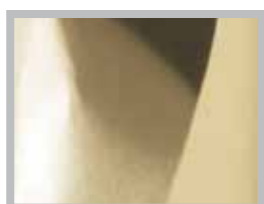


SD - Silverado

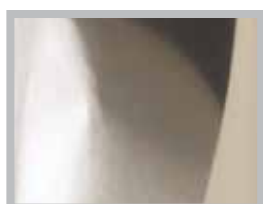


JV - Jade Crater

PVD Lifetime Finishes: PVD (physical vapor deposition) technology produces a hard, micro-thin coating similar in appearance to electroplating, but is much more durable and environmentally friendly. Specify **PVD(XXX)**.



PV - Polished Brass



LN - Light Nickel



DN - Dark Nickel

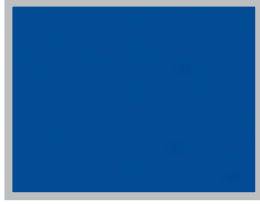


BN - Brushed Nickel

Diffuser Material: Specify (XX).



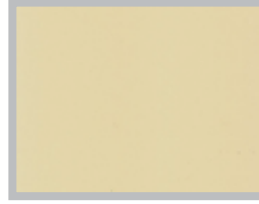
AM - Amber Acrylic



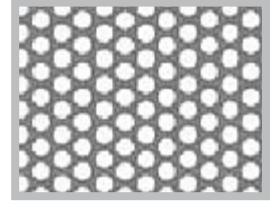
CB - Cobalt Blue Acrylic



WH - Opal White Acrylic



IV - Ivory



PF - Perforated Aluminum

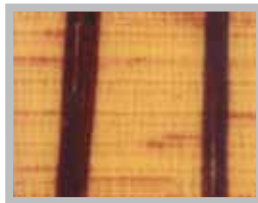
Digital Diffusers: Digital scans of real material embedded into durable acrylic for a natural look suitable for indoor or outdoor fixtures. Specify **DD(XXX)**.



FFX - Faux Alabaster



FSV - White Swirl



FBG - Digital Beach Grass



FBL - Digital Bone Leaves



FMC - Digital Mica

Configured Diffusers: Fabrics, botanicals and graphic designs embedded into acrylic resin for a rich, dynamic appearance. Specify **CD(XXX)**.



LCT - Celery Taipei



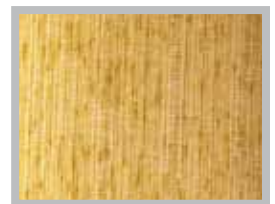
LGT - Toffee Leaves



LPT - Pearl Taipei



LSB - Beach Grass



LST - Saffron Taipei



LWS - Windowbox



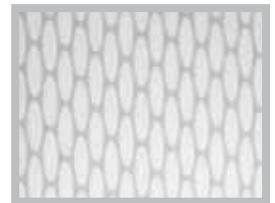
TBF - Bulbe



TCA - Courier



TCW - Connection



TEW - Eclipse



TMS - Mari



TQW - Cirque